

NAAMA 34th International Medical Convention

Empowering Global Collaboration

In collaboration with PalMed Europe and the
University of Michigan Center for Global Health

July 3 – July 5, 2025
Trinity College Dublin, Ireland



ORGANIZING COLLABORATORS



National Arab American Medical Association

The **National Arab American Medical Association (NAAMA)** is a leading non-profit, non-political, and non-sectarian organization dedicated to advancing the medical and educational interests of Arab American healthcare professionals. NAAMA connects a robust network of more than 6,000 Arab American physicians and supports over 40 **NAAMA NextGen** chapters across major universities in the United States. Its diverse membership includes physicians, scientists, dentists, pharmacists, chiropractors, nurses, and other healthcare professionals.

NAAMA promotes excellence through continuing medical education, philanthropic initiatives, and service projects. The organization is committed to fostering professional growth, enhancing collaboration among healthcare professionals with roots or affinity to the Arab world, and advancing diversity and inclusivity in the healthcare field.



PalMed Europe

PalMed Europe is an independent, nonprofit, and nonpolitical medical charity and professional organization established in 2012. Dedicated to improving healthcare for the Palestinian people, PalMed Europe brings together highly skilled medical professionals to deliver contemporary education, training, and essential clinical services. Its mission is to provide the highest quality healthcare to all Palestinians, regardless of sex, race, religion, or political affiliation.

The organization fosters collaboration among its members to share knowledge and expertise, establishes partnerships between European institutions and Palestinian healthcare facilities, and works closely with health establishments in Palestine to address local needs. Additionally, PalMed Europe liaises with governmental and non-governmental organizations to develop impactful healthcare solutions and represents Palestinian doctors on national and international platforms.



University of Michigan Center for Global Health Equity

The **Center for Global Health** at the University of Michigan is dedicated to fostering interdisciplinary collaboration across the university and with global partners to equitably prevent disease and improve health in low- and middle-income countries. Guided by a vision of sustainable communities where everyone has the opportunity to achieve optimal mental and physical health, the Center focuses on strategic themes including strengthening health systems, addressing social determinants of health, promoting environmental justice, advancing data science and technologies, and empowering women and communities to drive equitable health outcomes.

By partnering with global leaders and organizations, the Center aims to develop innovative solutions that address pressing health challenges and create lasting impact in underserved communities.

COLLABORATORS



Trinity College Dublin

Coláiste na Tríonóide, Baile Átha Cliath

The University of Dublin



GLOBAL
HEALTH & RELIEF
INITIATIVE

HENRY
FORD
HEALTHSM



MEET OUR TEAM

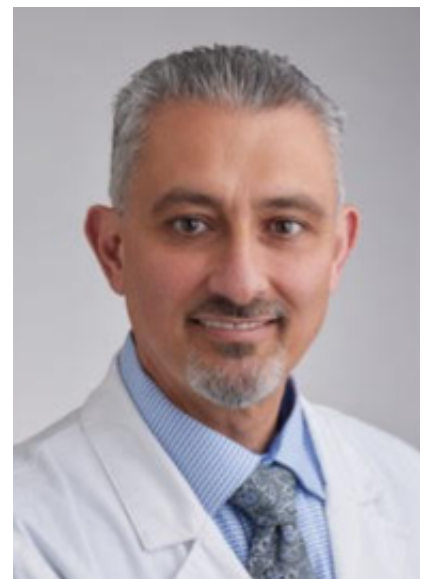


I am excited to welcome you to NAAMA's first global health-themed convention: Empowering Global Collaboration. In addition to the main programming, the convention will feature two key symposiums: one focusing on solidarity with conflict zone medical schools, and the other on Global Pathology, designed not only for pathologists but also for professionals from various fields. With participation from leading universities and organizations, this convention will be the starting point for building future collaborations that foster equitable partnerships and drive meaningful progress in global health.

Rouba Ali-Fehmi, MD

Convention Chair, Former NAAMA President
NAAMA NextGen Chair & Founder

Welcome to NAAMA's 34th International Medical Convention! This landmark event brings together healthcare leaders, researchers, and students to explore critical topics, including education, mental health, AI, and advancements in global health. With renowned institutions and experts from around the world, we aim to foster collaboration, drive innovation, and develop actionable strategies to improve global health outcomes. Thank you for being part of this transformative journey!



Raed Al-Naser, MD

NAAMA President

Scientific Committee



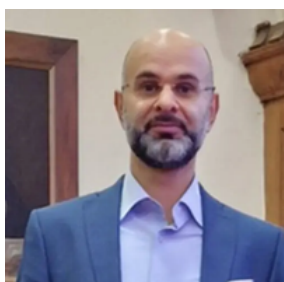
Nidal Moukaddam, MD, PhD
Scientific Committee Co-Chair



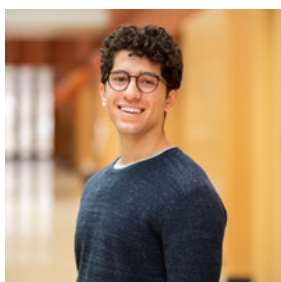
Mahmoud Loubani, MBBCh
Scientific Committee Co-Chair



Iman Hadaya, MD
Scientific Committee Member



Osama Samara, MD
Scientific Committee Member

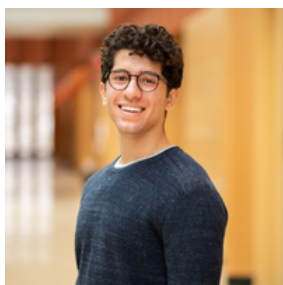


Omar Fehmi
NAAMA NextGen Vice-Chair



Marya Wahidi, MD
Convention Coordinator

Media & Communication Committee



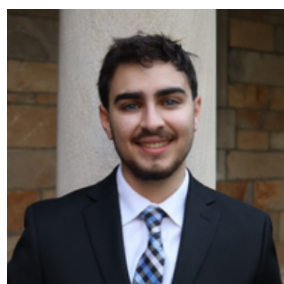
Omar Fehmi
NAAMA NextGen Vice-Chair



Marya Wahidi, MD
Convention Coordinator



Deena Aboul-Hassan
NAAMA NextGen Co-President

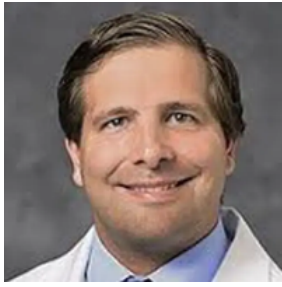


Ryan Jaroudi
NAAMA NextGen Co-President



Rana Yousif
NAAMA NextGen Chapter
Development Chair

Advisory Board



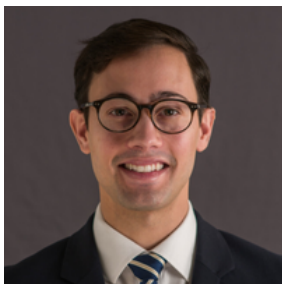
Hesham Shaban, MD
Henry Ford Health



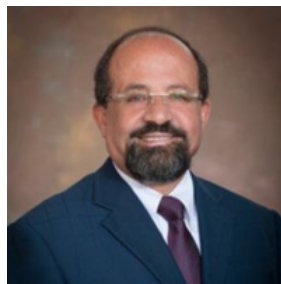
Joseph Kolars, MD, MACP
University of Michigan



Usamah Mossallam, MD, MBA
Henry Ford Health System



John Zervos, JD
Henry Ford Health



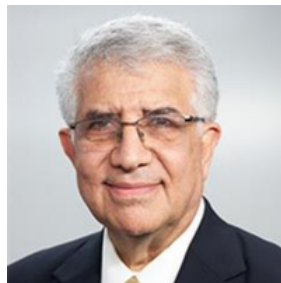
Adnan Hammad, PhD
Global Health Research & Solutions



Kamran Mirza, MBBS, PhD
University of Michigan



Hashem El-Serag, MD, MPH
Baylor College of Medicine

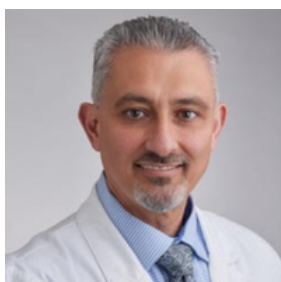


Omar Lattouf, MD, PhD
Emory University,
Tanner Health System

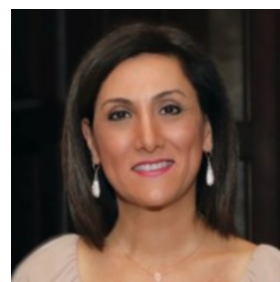


Wael Sakr, MD
Wayne State University
School of Medicine

Finance Committee



Raed Al-Naser, MD
NAAMA President



Rouba Samman
NAAMA Manager

PROGRAM OVERVIEW

Scientific Program

Key topics include:

- Medicine in Conflict Zones (Medicine, Cardiology, Surgery, Emergency Medicine, Public Health)
- Women's Health
- NAAMA NextGen: Future Leaders of Global Health
- Mental Health
- Infectious Disease & Vaccination
- AI & Digital Technology

CME Credits

Scientific Program offers up to 13 AMA PRA Category 1 Credit(s)[™]

This activity is planned and implemented in accordance with the Essentials and Standards of the Accreditation Council for Continuing Medical Education (ACCME) through the National Arab American Medical Association (NAAMA). The National Arab American Association is accredited by the ACCME to provide continuing medical education for physicians. NAAMA designates this educational activity for a maximum of 13 AMA PRA Category 1 Credits. Attendees should only claim credit commensurate with the extent of their participation.

Please scan the QR code to fill the Convention's Scientific Evaluation. Receiving your CME is contingent to filling the evaluation form at the end of the scientific program.



Solidarity with Conflict Zone Medical Schools

This symposium will highlight the devastating impact of conflict zones on medical schools and their students as well as the resulting effects on healthcare services. We aim to understand the current and future needs of medical education, identify priorities, and explore strategies for providing meaningful support.

Global Pathology & Laboratory Medicine Consortium (GPALM)

This symposium will serve as a dynamic platform for collaboration, highlighting advancements in pathology and laboratory medicine. The symposium aims to foster new partnerships, explore innovative projects, and promote global knowledge exchange among participants. Key goals include establishing sustainable collaborations, leveraging AI and digital pathology to advance the field, and driving impactful solutions that elevate pathology and laboratory medicine on a global scale.

SCHEDULED SESSIONS

July 3 – July 5, 2025 | Dublin, Ireland

Friday, July 4 th Trinity College Dublin	
8:00 AM – 8:30 AM	Registration
8:30 AM – 8:45 AM	Welcoming Ceremony Rouba Ali-Fehmi, MD Raed Al-Naser, MD Joseph Kolars, MD, MACP Mohamed Elhams, MBBCh, MRCP, FRCP
8:45 AM – 9:00 AM	Address by Head of the School of Medicine, Trinity College Dublin Colin Doherty, MD
9:00 AM – 9:30 AM	Keynote Address: Medicine in Conflict Zones Ghassan Abu Sittah, MBChB
9:30 AM – 10:00 AM	Sustainability in Global Health Joseph Kolars, MD, MACP
10:00 AM – 10:30 AM	Henry Ford Health: Commitment to Global and International Health Usamah Mossallam, MD, MBA
10:30 AM – 11:00 AM, Break	
11:00 AM – 11:30 AM	Humanitarian Aid in Crisis: Bridging Strategy and Frontline Impact Fawzi Al-Hammouri, MD, MSc, FRCP, ACPE; Nidal Moukaddam, MD, PhD & Nabil Elie Khoury, MD, FACEP, FACP, CHCQM
11:30 AM – 12:00 PM	Humanization of Health Care: Challenges and Rewards of Medical Volunteerism, A 38-Year Journey Usama Hamdan, MD, FICS
12:00 PM – 1:00 PM	Panel Discussion: Success Stories in Conflict Zones Moderator: Frédérique Vallieres, PhD Panelists: Mahmoud Loubani, MBBCh Zeina Mohanna, PhD Ghaiath Hussein, MBBS, PhD Fadi Issa, MD
1:00 PM – 2:00 PM, Lunch & Poster Presentations	

SCHEDULED SESSIONS

July 3 – July 5, 2025 | Dublin, Ireland

2:00 PM – 5:00 PM | Solidarity with Conflict Zone Medical Schools Symposium

2:00 PM – 2:10 PM	Welcoming Remarks from PalMed Mohamed Elhams, MBBCh, MRCP, FRCP
2:10 PM – 2:20 PM	Trinity College Supporting Students from Conflict Zones Colin Doherty, MD
2:20 PM – 2:45 PM	Emerging Challenges in Conflict Medicine and Emergency Response Eveline Hitti, MD, MBA
2:45 PM – 3:00 PM	Testimony from Medical Students in Conflict Zones
3:00 PM – 3:30 PM	GEM Scheme Overview Mahmoud Loubani, MBBCh Hibah Osman, MD, MPH
3:30 PM – 5:00 PM	Panel Discussion: Education in Conflict Zones Moderator: Colin Doherty, MD Panelists: Regien Biesma, PhD Jimmy Lee, BA, MBBCh BAO, FRCER, DTMH Riyadh Masharqah, MD Osama Samara, MD
5:00 PM	Closing Remarks



NAAMA
Education, Leadership, Philanthropy

Welcome to Ireland!

Become a member at naama.com

SCHEDULED SESSIONS

July 3 – July 5, 2025 | Dublin, Ireland

Saturday, July 5th | Trinity College Dublin

8:00 AM – 8:30 AM	Henry Ford Health Zero Suicide Program Linda Kaljee, PhD Joslyn Westphal, MPH
8:30 AM – 8:50 AM	Children in Conflict Zones Chadi Calarge, MD
8:50 AM – 9:15 AM	Global Surgery Umbrella Experience in Conflict Zones Serena Cruz, PhD
9:15 AM – 10:00 AM	Panel Discussion: Women in Medicine <i>Curated by Women in NAAMA</i> Moderator: Iman Hadaya, MD Panelists: Julia Dahl, MD & Aziza Nassar, MD, MPH
10:00 AM – 10:30 AM, Break	
10:30 AM – 11:15 AM	NAAMA NextGen: Building Tomorrow's Leaders in Global Health Moderator: Omar Fehmi Panelists: Ryan Jaroudi & Deena Aboul-Hassan
11:15 AM – 11:45 AM	Infectious diseases: Hepatitis A: From Epidemiology to Prevention Hashem El-Serag, MD, MPH
11:45 AM – 12:15 PM	Infectious diseases: Vaccines for Preventable Diseases in War Zones Hana Al-Sahly, MD
12:15 PM – 12:50 PM	Panel Discussion: AI in Medicine Moderator: Hassan Fehmi, MD, FASN, FNKF Panelists: Hassan Bencheqroun, MD & Islam Abudayyeh, MD
12:50 PM – 1:15 PM	Research in Global Health Vijaya "Arun" Kumar, MD, MPH & Ali Ghassani, MD, MPH

1:15 PM – 2:00 PM, Lunch & Poster Presentations

SCHEDULED SESSIONS

July 3 – July 5, 2025 | Dublin, Ireland

2:00 PM – 5:00 PM | Global Pathology & Laboratory Medicine (GPALM) Consortium

2:00 PM – 2:15 PM	Welcoming Remarks: Benefit of GPALM for all Healthcare Workers in Low and Middle Income Countries (LMIC) Joseph Kolars, MD, MACP Rouba Ali-Fehmi, MD
2:15 PM – 2:45 PM	Education in Global Pathology Kamran Mirza, MBBS, PhD
2:45 PM – 3:30 PM	Panel Discussion: Sustaining Global Health Partnerships & Projects Moderator: Joseph Kolars, MD, MACP Panelists: Wael Sakr, MD Kamran Mirza, MBBS, PhD Simona Stolnicu, MD, PhD Ileana Lopez-Plaza, MD Frédérique Vallieres, PhD
3:30 PM – 4:00 PM	AI & Digital Technology in Global Pathology Ulysses Balis, MD
4:00 PM – 5:00 PM	Panel Discussion: AI and Digital Pathology in LMIC Moderator: Ulysses Balis, MD Panelists: Aziza Nassar, MD, MPH Julia Dahl, MD Aleodor “Doru” Andea, MD, MBA
5:00 PM	Closing Remarks



Please scan the QR code to fill the Convention's Scientific Evaluation. Receiving your CME is contingent to filling the evaluation form at the end of the scientific program.

SOCIAL PROGRAM

July 3 – July 5, 2025 | Dublin, Ireland

Thursday, July 3rd

6:30 PM – 8:00 PM	Welcome Reception Book of Kells Experience & Reception in Long Room The University of Dublin Trinity College College Green, South-East Inner City Dublin, Ireland
-------------------	---

Friday, July 4th

6:30 PM – 12:00 AM	Convention Gala The Round Room At The Mansion House Dawson Street Dublin 2, Ireland
--------------------	--

Saturday, July 5th

7:00 PM – 12:00 AM	Irish Evening The Shelbourne Hotel 27 St Stephen's Green Dublin 2, Ireland
--------------------	---



Welcome Reception



Convention Gala



Evening Entertainment

SOCIAL PROGRAM

July 3 – July 5, 2025 | Dublin, Ireland

Friday, July 4th

2:00 PM – 5:00 PM

EPIC Emigration Museum & Dublin City Tour

Saturday, July 5th

9:00 AM – 1:00 PM

Powerscourt House and Gardens (Companions Tour)

2:00 PM – 5:00 PM

Guinness Storehouse & Dublin City Tour

Sunday, July 6th – Wednesday, July 9th

ALL DAY

Post Convention Tour to Cork

Day 1: Cork

Day 2: Cobh and Kinsale

Day 3: Dantry House and Garnish Island



EPIC Emigration Museum

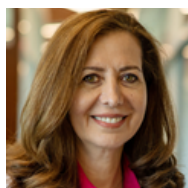


Powerscourt House

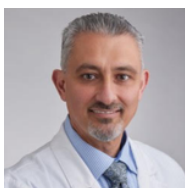


Cork

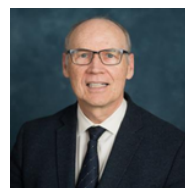
SPEAKERS



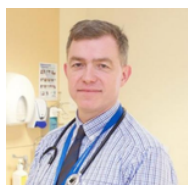
Rouba Ali-Fehmi, MD
Medical Director &
Professor, Breast
Pathology, University of
Michigan



Raed Al-Naser, MD
NAAMA President



**Joseph Kolars, MD,
MACP**
Director, Center for
Global Health, University
of Michigan



Colin Doherty, MD
Head, Trinity College
Dublin School of
Medicine



**Ghassan Abu Sittah,
MBChB**
Rector, University of
Glasgow



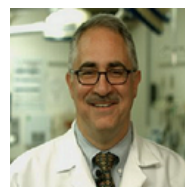
**Usamah Mossallam,
MD, MBA**
Vice President & Medical
Director, International
Initiatives, Henry Ford
Health System



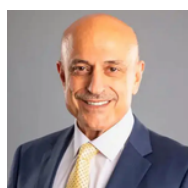
**Fawzi Al-Hammouri,
MD, MSc, FRCP, ACPE**
Executive Chairman of GHI
| Chairman of Global
Health and Relief Initiative
- Jordan | Interim Chair of
HopeBridge



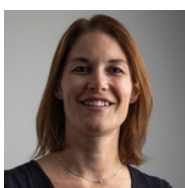
**Nidal Moukaddam,
MD, PhD**
Professor, Psychiatry,
Baylor College of
Medicine



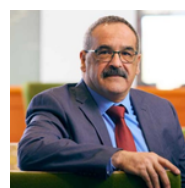
**Nabil Elie Khoury, MD,
FACEP, FACP, CHCQM**
Attending physician,
Trinity Livonia
Emergency Department



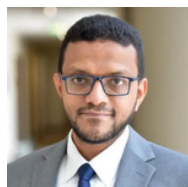
**Usama Hamdan, MD,
FICS**
Board President, Global
Smiles Foundation



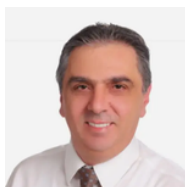
**Frédérique Vallieres,
PhD**
Director, Trinity Centre
for Global Health, Trinity
College Dublin



**Mahmoud Loubani,
MBBCh**
Chair, PalMed Academy
Consultant,
Cardiothoracic Surgery,
Hull University Teaching
Hospitals NHS Trust



**Ghaiath Hussein,
MBBS, PhD**
Assistant Professor,
Medical Ethics, Trinity
College Dublin



Fadi Issa, MD
Instructor, Emergency
Medicine, Harvard
Medical School



Zeina Mohanna, PhD
Member, Board of
Directors, Amel
Association International



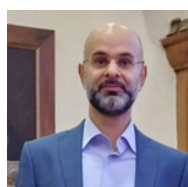
**Mohamed Elhams,
MBBCh, MRCP, FRCP**
Consultant Acute
Physician Chair, PalMed
UK Officer for External
Relations and Foreign
Affairs, PalMed Europe



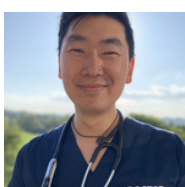
Eveline Hitti, MD, MBA
Chairperson & Professor
of Clinical Emergency
Medicine, Department of
Emergency Medicine,
American University of
Beirut Medical Center



**Hibah Osman, MD,
MPH**
Palliative care physician,
Dana-Farber Cancer
Institute (DFCI) Assistant
Professor, Harvard
Medical School



Osama Samara, MD
Consultant, Interventional
Cardiology
Somerset Foundation
Trust Hospital



**Jimmy Lee BA, MB
BCh BAO, FRCEM,
DTMH**
Consultant, Emergency
Medicine, University
Hospital Galway



Regien Biesma, PhD
Vice President Global
Health Initiative EUPHA |
Associate Professor of
Global Health, University
Medical Center Utrecht



Riyadh Masharqah, MD

Chair, Advisory Council,
PalMed Europe
Plastic and Burn Surgery
Consultant Manchester, UK



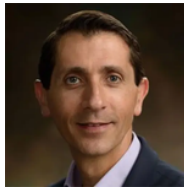
Linda Kaljee, PhD

Senior Scientist, Global
Health Initiative, Henry
Ford Health



Joslyn Westphal, MPH

Director of Zero Suicide
International, Henry Ford
Health



Chadi Calarge, MD

President, NAAMA
Houston Chapter
Professor, Psychiatry,
Baylor College of
Medicine



Serena Cruz, PhD

President, Global
Surgery Umbrella



Iman Hadaya, MD

Anesthesiology, Kaiser
Permanente



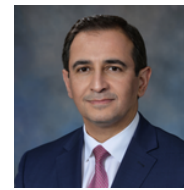
Aziza Nassar, MD, MPH

Chair and Professor,
Department of Pathology
and Laboratory Medicine,
Mayo Clinic



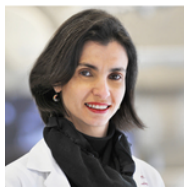
Julia Dahl, MD

Assistant Professor,
Gastrointestinal and
Hepatobiliary Pathology,
Placental Pathology
Director, MLabs



Hashem El-Serag, MD, MPH

Professor & Chair,
Department of Medicine,
Baylor College of
Medicine



Hana Al-Sahly, MD

Professor, Molecular
Virology, Microbiology
and Infectious Diseases,
Baylor College of
Medicine



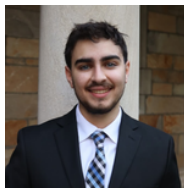
Omar Fehmi

NAAMA NextGen
Vice-Chair



Deena Aboul-Hassan

NAAMA NextGen
Co-President



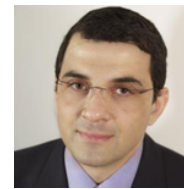
Ryan Jaroudi

NAAMA NextGen
Co-President



Hassan Fehmi, MD, FASN, FNKF

Service Chief, Nephrology
& Hypertension
Henry Ford Hospital West
Bloomfield, Michigan



Islam Abudayyeh, MD

Professor, Medicine,
Loma Linda University



Hassan Bencheqroun, MD

CEO Founder, Medical AI
Academy | Assistant
Clinical Professor, UCR
School of Medicine



Ali Ghassani, MD, MPH

Community Research
Center Co-Leader, Amel
Association
Epidemiology & Biostatistics
Lecturer Lebanese
International University



Vijaya "Arun" Kumar, MD, MPH

Research Director,
Emergency Medicine,
Wayne State University



Kamran Mirza, MBBS, PhD

Professor & Director,
Division of Education,
Department of Pathology,
University of Michigan



Simona Stolnicu, MD, PhD

Professor, Pathology,
UMFST Targu Mures



Wael Sakr, MD

Dean, Wayne State
University School of
Medicine



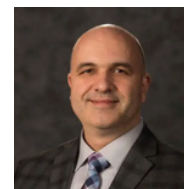
Ileana Lopez-Plaza, MD

Pathology Senior Staff,
Therapeutic Apheresis,
Transfusion Medicine,
Henry Ford Health



Ulysses Balis, MD

Division Director,
Pathology Informatics,
Department of
Pathology, University of
Michigan



Aleodor "Doru" Andea, MD, MBA

Chief, Dermatopathology
and Professor of Oncology,
Roswell Park
Comprehensive Cancer
Center

ABSTRACTS

The experiences of patients in the community following discharge on Outpatient Parenteral Antimicrobial Therapy (OPAT), a systematic review

Aarti Gupta

Health Service Executive (HSE), Ireland

Duodenal Injury in a Resource-Scarce War Setting: A Case Report from Gaza

Buthaina Abu Awad¹, Hala Al-Zaghloul¹, Amal Alawadat¹, Ahmad Qalajo¹, Hamza Murad¹, Dana Alrafayia^{3,4}, Rania Rashed¹, Malek Zahran¹, Anas Khraim¹, Laila Tutanji, Osama Hamed²

¹ The University of Jordan, School of Medicine, Amman, Jordan

² Specialty Hospital, Consultant General and Hepatobiliary Surgeon, Amman, Jordan

³ University of Jordan, School of Medicine, Department of Surgery, Amman, Jordan

⁴ University of Jordan Hospital, General Surgery Department, Amman, Jordan

Audit of OPAT (Out-Patient Parenteral Antimicrobial Therapy) Service Efficiency: Time to Treatment Initiation

Dylan Chan, Georgia McNevin, Ashwin Delmonte Sen, Sinead Fenlon, Aoife Pearson, Mubashir Habib, Nalisu Mazubane, Sarmad Waqas

School of Medicine, Trinity College Dublin, Clinical Medicine, TUH School of Medicine Trinity College Dublin, Infectious Diseases Department Tallaght University Hospital

Mysteries on the Menu: A Traveller's Health Misadventure

Faria Hussain¹, Kaitlyn O'Brien¹, Colm Kerr^{4,5}, Alessandro Gerada^{6,7}, Sarah Bergin², Aoife Colgan⁸, Paul McKeown⁹, David Kane^{3,4}, Ciaran Bannan^{4,5}, Sarmad Waqas^{1,4}

¹ Department of Infectious Diseases, Tallaght University Hospital, Ireland

² Department of Microbiology, Tallaght University Hospital, Ireland

³ Department of Rheumatology, Tallaght University Hospital, Ireland

⁴ Clinical Medicine; School of Medicine, Trinity College Dublin, Dublin, Ireland

⁵ Department of Infectious Diseases, St. James's Hospital, Ireland

⁶ Brucella Reference Unit, Department of Infection and Immunity, Liverpool Clinical Laboratories, Clinical Support Services Building (CSSB), Liverpool University Hospitals NHS Foundation Trust, Liverpool, United Kingdom

⁷ Antimicrobial Pharmacodynamics and Therapeutics Group, Pharmacology Department, Institute of Systems, Molecular & Integrative Biology, University of Liverpool, Liverpool, United Kingdom

⁸ Gastroenteric, Zoonotic and Vectorborne Diseases Team, HSE-Health Protection Surveillance Centre, Ireland

⁹ Consultant in Public Health Medicine, National Health Protection, HSE Public Health: National Health Protection Office, Ireland

OBSESS: a language-free observational system for evaluating refugee mother-child interactions

Khraisha, Q., Fan, M., Lee, M., Himsi, M., Raguragui, M., Chuhan, C., Put, S., Volta, B., Wadhwa, A., Dos Santos, E., Çakmak, M., Qasim, A., El Kharouf, A., von Stumm, S., Marechal, I., Dajani, R., Michalek, J., & Hadfield, K.

Trinity College Dublin, Ireland

Parenting and mental health in protracted refugee situations: A systematic review

Khraisha, Q., Abujaber, N., Carpenter, S., Crossen, R. J., Kappenberg, J., Kelly, R., Murphy, C., Norton, O., Put, S. M., Schnoebelen, K., Warraitch, A., Roney, S., & Hadfield, K.

Trinity College Dublin, Ireland

Evaluating GPT-4's efficacy in screening and extracting data from peer-reviewed and grey literature in multiple languages

Khraisha, Q., Put, S., Kappenberg, J., Warraitch, A., & Hadfield, K.

Trinity College Dublin, Ireland

Coparenting, mental health, and the pursuit of dignity: A systems-level analysis of refugee father-mother narratives

Khraisha, Q., Sawalha, L., Hadfield, K., Al-Soleiti, M., Dajani, R., & Panter-Brick, C.

Trinity College Dublin, Ireland

Crafting Tobacco Interventions for Arab-Americans

Luna Samman

Wayne State University, Detroit, MI, United States

"She was the last one to be spoken to" Experiences of gender, race and language bias within feedback encounters: a narrative study

Majd Alharthi, Khaled Alsayegh, Helen Kelly, Murine Spooner

Department of Medicine, Royal College of Surgeons in Ireland (RCSI)

Education, Research Centre, Royal College of Surgeons in Ireland (RCSI)

Psychological Impact of the ongoing Gaza- Israeli War among Medical and Paramedical Personnel in Palestine and Israel, a systematic review.

Malik E. Juweid, Ahmed Saad Abdulkadir, Layla S. Ellayyan, Seba Mahmoud Alghananim, Tala Mohammad, Talin Hijazeen, Nour Qasim Barakat, Ahmad Sameer Jaber, Jihad Abu Zayed, Laila Tutunji, and Yaman Jarrar

University of Jordan, Amman, Jordan

Exploring Public Engagement in Irish Health Research: A Descriptive Altmetric Analysis (2017-2023)

Ms. Shaimaa Abuhaimed¹, Ms. Beatrice Yeoh¹, Dr. Melissa Sharp²

¹Yeoh School of Medicine, Royal College of Surgeons in Ireland (RCSI)

²Epidemiology, Royal College of Surgeons in Ireland (RCSI)

Massive Soft Tissue Crush Injury in a Conflict Zone, A Fatal Case from Gaza

Ola Al Ahdab¹, Alaa Irhimeh¹, Talah Fatayer¹, Rahaf Al Jibarat¹, Roa Jaber¹, Lara Al Hasami¹, Tala Qouzah¹, Rahaf Muwalla¹, Laila Tutanji², Osama Hamed³

¹School of Medicine, The University of Jordan, Amman, Jordan

²Department of Pediatrics, School of Medicine, University of Jordan, Amman, Jordan

³Specialty Hospital, Consultant General and Hepatobiliary Surgeon, Amman, Jordan

Craniotomy and Debulking of Olfactory Groove Meningioma Causing Only Visual Failure

Omar Abu Saadeh, Alan Beausang, Melanie LangOrsini, Donnacha O'Brien

Royal College of Surgeons in Ireland (RCSI)

Pioneering Irish Experience with Pelvic Exenteration: Outcomes from a Tertiary Referral Centre

Omar Abu Saadeh, Eimear T. Kyle, Ben Creavin, Eamon Francis, Feras Abu Saadeh, Patrick Maguire, Paul McCormick, Christina Buckley, Alison Corr, Louise C. McLoughlin, Peter E. Lonergan, Michael E. Kelly

Royal College of Surgeons in Ireland (RCSI), Trinity St. James's Cancer Institute

Silenced by Stigma: The Impact of Language and Cultural Barriers on Mental Health and Healthcare Access in Low-Income Arabic-Speaking Families

Rayna Gammo, Ty Partridge

Wayne State University, Detroit, MI, United States

Pathways to Prevention: Educational Tools for Diabetic Neuropathy in Egypt

Ryan Jaroudi, Deena Aboul-Hassan, Sana Sharba, Claudia Haouilou, Adham Adam, Miryam El-Saghir

University of Michigan, Ann Arbor, MI, United States

Complex Multiorgan Penetrating Abdominal Trauma During Gaza conflict – A Case Report

Yasmeen Ali, Lina Abdelfattah, Saif Alajmi, Mohammad El Hindi, Farah Al-Bdour, Osama Al Atrash, Mohammad Abu-Hassan, Adan Alnawaiseh, Osama Hamed, Malik Juweid

The University of Jordan

The Impact of Conflict on Medical Education: Implications for Healthcare Systems in War-Torn Countries

Ziad Fehmi¹, Marya Wahidi², Ryan Jaroudi², Mahmoud Loubani³, Oleksandr Pokanevych⁴, Thanaa Alagraa⁵, Ilham M Omer⁶, Lina Ahmed⁷, Aula Abbara⁸, Mohamed Hamze⁹, Rouba Ali-Fehmi², Quentin Eichbaum¹⁰

¹ Feinberg School of Medicine, Northwestern University, Chicago, IL, USA

² University of Michigan, Ann Arbor, MI, USA

³ PalMed Academy, London, UK

⁴ Kyiv Medical University, Kyiv, Ukraine

⁵ Alneelain University, Khartoum, Sudan

⁶ University of Khartoum, Khartoum, Sudan

⁷ University of Medical Sciences and Technology, Khartoum, Sudan

⁸ Imperial College NHS Healthcare Trust, London, UK

⁹ Syrian American Medical Society (SAMS), Munich, Germany

¹⁰ Vanderbilt University, Nashville, TN, USA



Are you a healthcare student and want to get involved?
Become a member at naamanextgen.org



The **University of Michigan Center for
Global Health Equity**
is proud to support



NAAMA
Education, Leadership, Philanthropy

&



NAAMA
NextGen

at the
34th International Medical Convention
Dublin, Ireland | July 2025

Henry Ford Health: Healing Beyond Boundaries, Leading the Future of Medicine

Legacy of Vision: Where Innovation Meets Compassion

Founded in 1915 by the legendary auto pioneer Henry Ford, this world-renowned institution transformed the way healthcare was delivered in America. With a century-long legacy of pioneering innovation, Henry Ford Health has become an epicenter for high-acuity care, groundbreaking medical research, and patient-centered healing; welcoming individuals from all corners of the world.

Comprehensive Care. Relentless Commitment. One Trusted System

Henry Ford Health is a leading academic medical center serving Michigan and beyond with a full range of care; from primary and preventive services to advanced treatment in cancer, heart surgery, neurology, orthopedics, and transplant. It also offers virtual care, home healthcare, dialysis centers, comprehensive pharmacy services, and eye care for a seamless, patient-centered experience. With 50,000+ team members and over 10,000 physicians and researchers and 15,000 nurses, it ranks among Michigan's largest employers. The system leads in medical education, training 6,000+ students and fellows annually, and conducts over 3,000 research projects, ranking among the top three NIH-funded institutions in the state.

Guided by CEO Robert G. Riney, the system operates over 550 locations, including 13 acute care hospitals, 3 behavioral health facilities. More than a healthcare provider, Henry Ford Health is a lifelong partner on each patient's journey; delivering care that is personalized, science-driven, and compassion-led.

Mission & Vision: Human Life at the Core of Every Breakthrough

- Mission: To improve people's lives through excellence in the science and art of health care and healing
- Vision: The trusted partner in health, leading the nation in superior care and value

Pillars of Excellence: Our Guiding Values

- Compassion: We provide a heartfelt experience to every patient, member and each other.
- Relentless Innovation: We continuously pursue what's possible through research, education, clinical and operational excellence
- Global Standard of Quality: We deliver beyond expectation.
- Health Equity for All: Access, respect, and dignity across every culture.
- Results: We reliably deliver on our promise to be leaders in safety and affordability, ensuring the health of our communities

AT HENRY FORD HEALTH, EVERY INNOVATION, EVERY DIAGNOSIS, AND EVERY HEALING TOUCH IS GUIDED BY A CENTURY-OLD PROMISE: TO TREAT EVERY PERSON WITH DIGNITY, PRECISION, AND HOPE.



**OUR WORLD
CLASS
FACULTY AND
LABORATORY
TEAM HAS
YOU COVERED!**

mlabs.umich.edu
800.862.7284



REQUEST A CONSULT

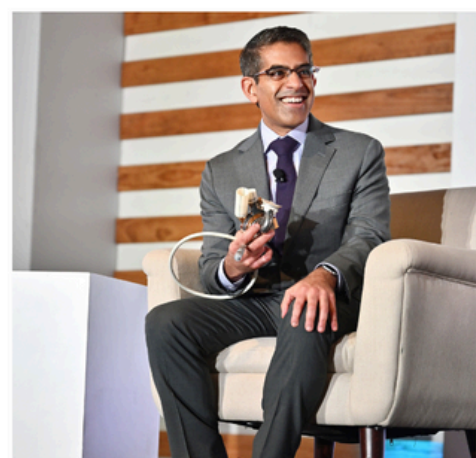


MOLECULAR ONCOLOGY

M I LABORATORIES

Baylor
College of
Medicine

THE MARGARET M. AND ALBERT B. ALKEK
DEPARTMENT OF
MEDICINE



We advance future medicine,
educate future doctors, and
provide compassionate care.

***Choose Baylor Medicine
for all of your needs.***



**SCAN FOR
MORE INFORMATION!**

www.bcm.edu/departments/medicine

WAR & RECOVERY PODCAST SERIES

A NEW PERSPECTIVE ON TRAUMA, MENTAL HEALTH & RECOVERY



Go to GlobalHealthRelief.org to watch the War & Recovery podcasts.

Sponsorships available.

Produced by:



**The New HopeBridge App Connects the
Right Medical and Humanitarian Teams
to People Who Need Them the Most.**



Learn more about HopeBridge at HopeBridge.ngo.

We are grateful to the generous work and resources
of PwC for the creation of the HopeBridge app.

HopeBridge



Platform is focused on facilitating the delivery of immediate **healthcare services** across 7 critical categories



Hospital Rehabilitation



Medical Supplies and Equipment



Workforce Support



Medical Education



Medical Evacuation



Nutritional Support



Orphan Support



Other



Transparency



Real-time tracking



Equitable distribution of aid



Empowering Hope & Enabling Impact

HopeBridge is a dedicated **humanitarian aid platform** designed to facilitate the seamless **request, coordination, and delivery of humanitarian** assistance to communities affected by war and crisis.

It ensures access to **healthcare services and humanitarian relief** to vulnerable populations by fostering collaboration among **healthcare providers, humanitarian organizations, and local communities**.

HopeBridge is more than just a tool—it is a **lifeline for communities in distress** bridging the gap between urgent needs and global aid resources

Visit us at: www.hopebridge.ngo



ILMAUSA (INTERNATIONAL LEBANESE MEDICAL ASSOCIATION - USA) IS A NONPROFIT ORGANIZATION UNITING LEBANESE MEDICAL PROFESSIONALS ACROSS THE UNITED STATES. WE SUPPORT MEDICAL EDUCATION, RESEARCH, AND HUMANITARIAN INITIATIVES, WITH A STRONG COMMITMENT TO ADVANCING HEALTHCARE IN LEBANON.

<https://ilmausa.org/>



NAAMA
NextGen

SAVE THE DATE!

6th National Summit

September 20-21

University of Michigan Ann Arbor

SAVE THE DATE

47TH NATIONAL MEDICAL CONVENTION

WASHINGTON DC

OCTOBER 10-13, 2025

REGISTRATION & INFO COMING SOON AT [NAAMA.COM](https://naama.com)



NAAMA
Education, Leadership, Philanthropy

The NAAMA 34th International Medical Convention would not have been possible without the support of our student volunteers.

Thank you for your contributions!



M
CGHE



europaMed
europeuk